



NEW

GOODYEAR

EAGLE F1 SPORT

REV UP YOUR PERFORMANCE

with *EAGLE CLAW GRIP*



Handling
Performance



Braking
Performance



***1 TO 1 EXCHANGE**
if damaged by road hazards.

*Terms & conditions apply.

0%

INTEREST INSTALLMENTS**
UP TO 12 MONTHS

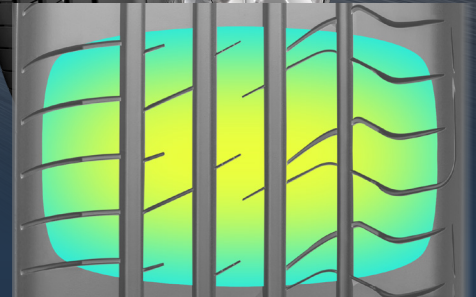
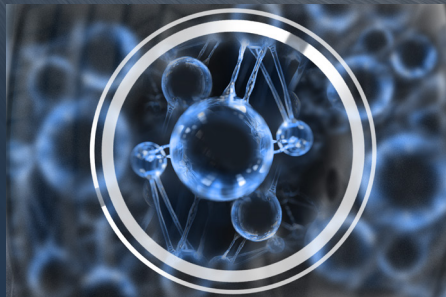
GOODYEAR

GOODYEAR

EAGLE F1 SPORT

REV UP YOUR PERFORMANCE

More fun driving with EAGLE F1 sport. With Eagle Claw Grip for superior handling and braking performance

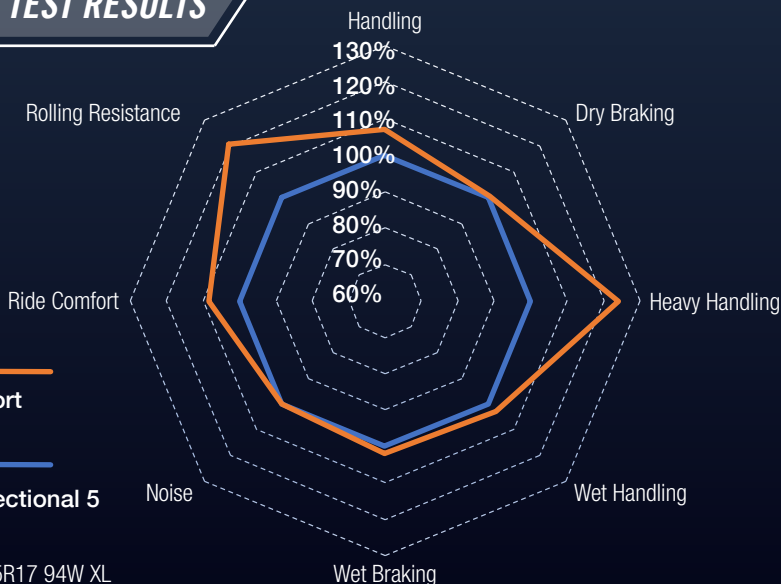


Featuring unique Eagle Claw Grip with stronger shoulder blocks to achieve superior handling and braking performance

Designed with DynamicBraking Technology to maximize road contact patch. With high silica tread compound to deliver superior braking performance

Built with a narrower lateral grooves and closed tread design with noise barrier strip for a quieter ride

TEST RESULTS



AVAILABLE SIZES

- | | |
|-----------------|----------------|
| 195/50 R16 84V | 235/45 R17 94W |
| 205/45 R16 87W | 245/40 R17 95W |
| 205/50 R16 91W | 245/45 R17 95Y |
| 205/55 R16 91W | 215/45 R17 93W |
| 205/45 R17 88W | 225/40 R18 92Y |
| 215/45 R17 91Y | 225/45 R18 95W |
| 215/50 R17 91W | 235/40 R18 95W |
| 215/55 R17 94V | 235/45 R18 98W |
| 225/45 R17 94W | 245/40 R18 93Y |
| 225/50 R17 98W | 255/35 R18 94W |
| 225/55 R17 101W | 265/35 R18 97W |

Tire size: 225/45R17 94W XL
 Testing vehicle: VW GOLF VII GTI 2.0TSI
 Testing place: MIREVAL, FRANCE
 Testing date: Nov. '19+ May '20